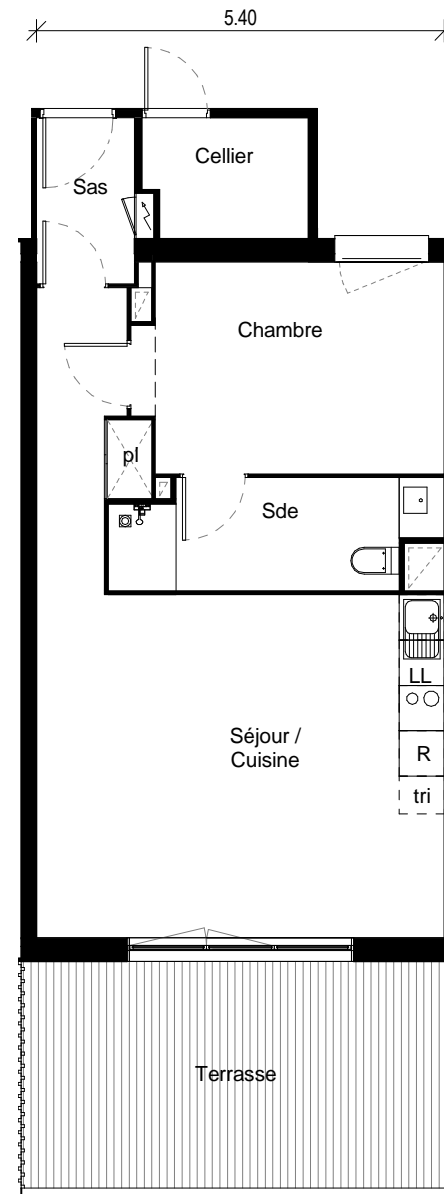
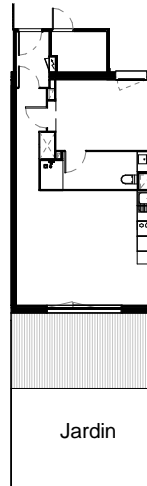
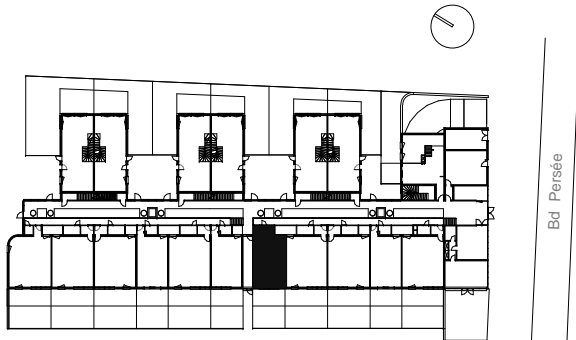
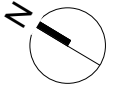


# CARACTÈRE



<b>Appartement n°</b>	<b>06</b>
<b>Type</b>	<b>T2</b>
<b>Niveau</b>	<b>RDC</b>
Séjour / Cuisine	29.33 m <sup>2</sup>
Chambre	11.10 m <sup>2</sup>
Sde	5.94 m <sup>2</sup>
Sas	2.86 m <sup>2</sup>
<b>Surface habitable</b>	<b>49.23 m<sup>2</sup></b>

Jardin	22.40 m <sup>2</sup>
Terrasse	16.80 m <sup>2</sup>
Cellier	3.37 m <sup>2</sup>

La surface des pièces comprend la surface des placards

Taillandier Architectes Associés



Crédit Agricole Immobilier Promotion  
Siège social : 12 place des États-Unis  
92545 Montrouge cedex  
tél 01 43 23 39 00  
www.ca-immobilier.fr